

Extra Reading

Reading about a Quiz Show

A Read the text and choose the best answers below.

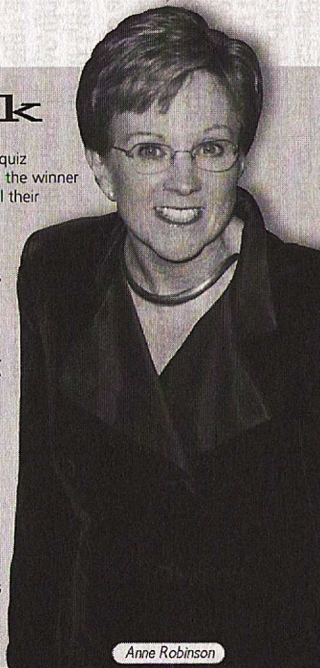
The Weakest Link

The popular British television programme *The Weakest Link* is not like other quiz shows. In most quiz shows, the contestants compete against each other and the winner is the person who answers the most questions correctly. Losers try to conceal their disappointment in front of the camera, usually congratulate the winner and certainly don't insult the other contestants. Well, *The Weakest Link* does things very differently.

The aim of the game is to win as much money as possible. The game begins with nine contestants who answer questions in turn. Every correct answer adds to the final prize money. A series of nine correct answers is an added bonus in prize money.

At the end of every round, the contestants decide which player to get rid of. That player is referred to as the weakest link. The contestants usually choose the player with the most incorrect answers. However, they have also been known to eliminate very skilled players because they are afraid of having to compete against them in the final round. Interestingly, the two remaining finalists are not always the contestants with the most correct answers.

Unlike other quiz shows, *The Weakest Link* encourages losers to openly express their disappointment and even to insult the other contestants. The red-headed hostess of the show, Anne Robinson, also makes insulting, personal comments about the players. In fact, her aggressive style is considered to be the trademark of the show. Australia, New Zealand and other countries with their own *Weakest Link* shows have got hostesses who behave like and resemble Anne Robinson. Judging by the millions of viewers who watch the show, the fact that *The Weakest Link* is different from other quiz shows only adds to its popularity.



Anne Robinson

- The winner in *The Weakest Link*
☐ a. has got the most correct answers
☐ b. insults the other contestants
☒ c. wins a large sum of money
- Anne Robinson
☐ a. insults the other quiz show hostesses
☐ b. also appears in Australia and New Zealand
☒ c. is not always polite

B Are the sentences true (T) or false (F) according to the text? Find evidence in the text to support your answers.

- T 1. Skilled players are often a threat to the other players. *However, contestants have also been known to eliminate very skilled players because they are afraid of having to compete against them in the final round.*
- F 2. The finalists are always the most skilled players. *Interestingly, the two remaining finalists are not always the contestants with the most correct answers.*
- T 3. *The Weakest Link* shows around the world are similar. *Australia, New Zealand and other countries with their own Weakest Link show have got hostesses who resemble and behave like Anne Robinson.*

C Find words or expressions in the text that mean:

- one after the other (line 8) *in turn*
- eliminate (line 11) *get rid of*
- symbol (line 21) *trademark*
- look like (line 23) *resemble*

Extra Listening

Trivia

You are going to hear a conversation about going out in Britain. Listen and answer the questions.

- Lewis' friend, Laura, is interested in
☒ a. historic palaces
☐ b. the royal family
☐ c. old homes
- Because many people visit Buckingham Palace,
☒ a. Amelia recommends getting there early
☐ b. Amelia does not recommend going there
☐ c. Amelia recommends changing the guard early
- Big Ben
☐ a. was named after Benjamin Franklin
☐ b. is rung once a day
☒ c. is heard on the radio
- The prison in the clock tower
☐ a. has not been used for eighty years
☒ b. is not open to the public
☐ c. is open at night
- Lewis says that
☐ a. he is a Harry Potter fan
☐ b. Tony isn't a Harry Potter fan
☒ c. Laura and Tony are Harry Potter fans
- J. K. Rowling went to the café to
☐ a. have dinner
☒ b. write
☐ c. work
- Amelia thinks Lewis shouldn't go to the café because
☐ a. it isn't that interesting
☒ b. it's very different today
☐ c. you can only get coffee there
- According to legend, the Loch Ness monster was first seen in
☒ a. 565 AD
☐ b. Saint Columba
☐ c. 1933
- The monster became famous when
☐ a. experts found it
☒ b. newspapers reported on it
☐ c. photos proved that it existed
- Amelia knows a lot of information because she
☒ a. likes doing trivia quizzes
☐ b. likes to read tourist magazines
☐ c. works at a pub

